

Rena grounding response

NZ Chambers of Commerce

TAURANGA



Andrew Clapham 10 November 2011

New Zealand Government

Presentation overview

- Situation Report as at 1:30pm yesterday
 - Vessel and salvage operations
 - Containers
 - Oil-spill response and clean-up
- Priorities
- Roles and Responsibilities
- Current photos and images

Situation Report – 9-11-2011 cont.

- Vessel and Salvage Operations
 - Sea water being pumped into starboard #5 to purge air pockets
 - No further damage to *Rena* evident

Situation Report – 9-11-2011 cont.

- Containers
 - 1280 on board
 - 88 lost overboard (est)
 - 31 in known locations
 - 57 not located (est)
 - **ST60** barge anchoring system successfully trialled
 - The barge **Brandywine** collecting bagged debris from Motiti Island

Situation Report – 9-11-2011 cont.

- Containers cont.
 - The barge ***Subritzki*** being prepared for crane and winch operations
 - ***Smit Borneo*** crane barge departs Singapore 9 November
 - Transponders fitted to 35 containers
 - 200 coming from USA

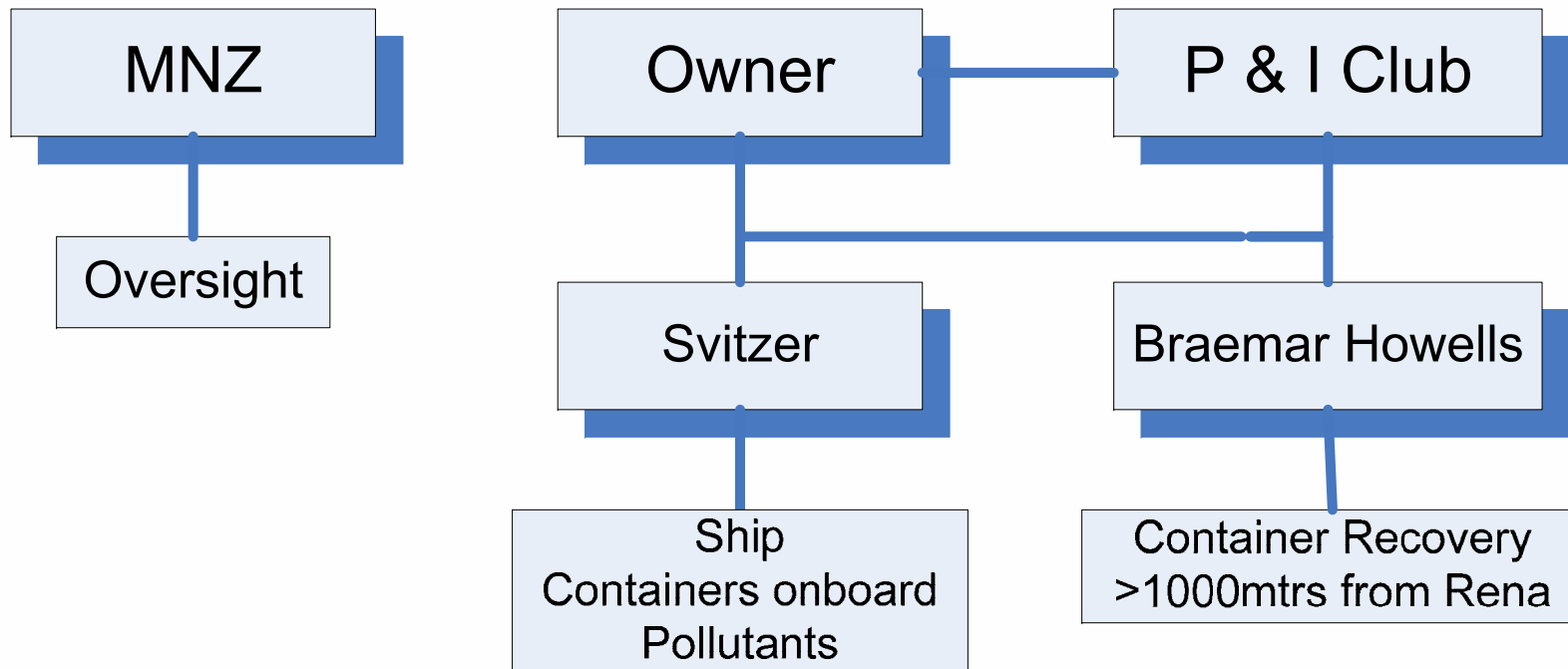
Situation Report – 9-11-2011 cont.

- Oil spill response and clean-up
 - No significant release of oil from *Rena* for over a week
 - Beach cleaning of weathered oil is continuing
 - Mechanical equipment is being used where effective
 - 50 people tending 400 birds that have been cleaned and 3 still being treated

Priorities

- Removal of oil has been and continues to be the immediate priority
- 358t of HFO remains in the submerged starboard #5 wing tank
- Wreck removal will be complicated and occur over a longer period of time
- Director has initiated next steps – issued notice to owners that they are expected to secure and remove wreck

Roles & responsibilities

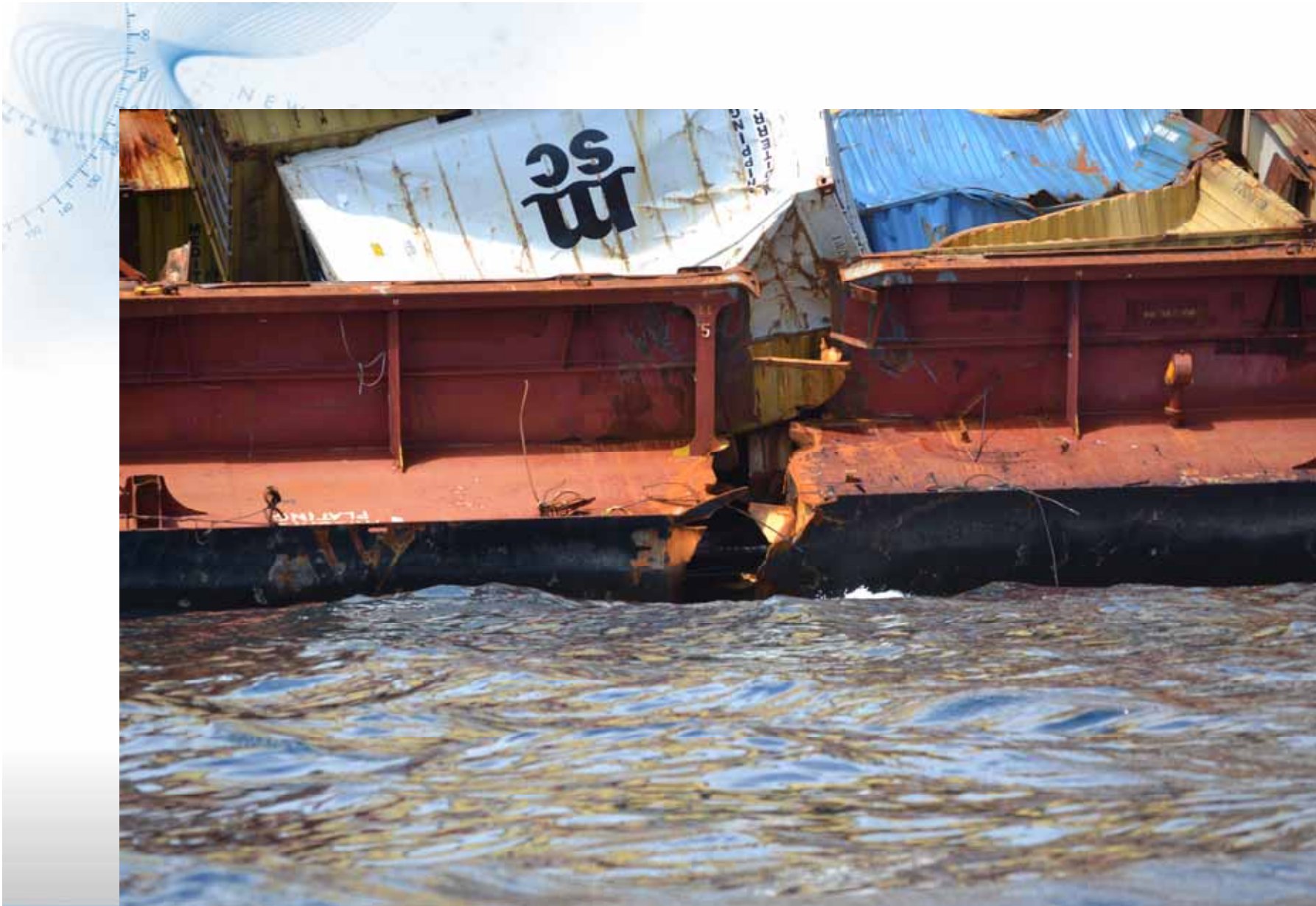




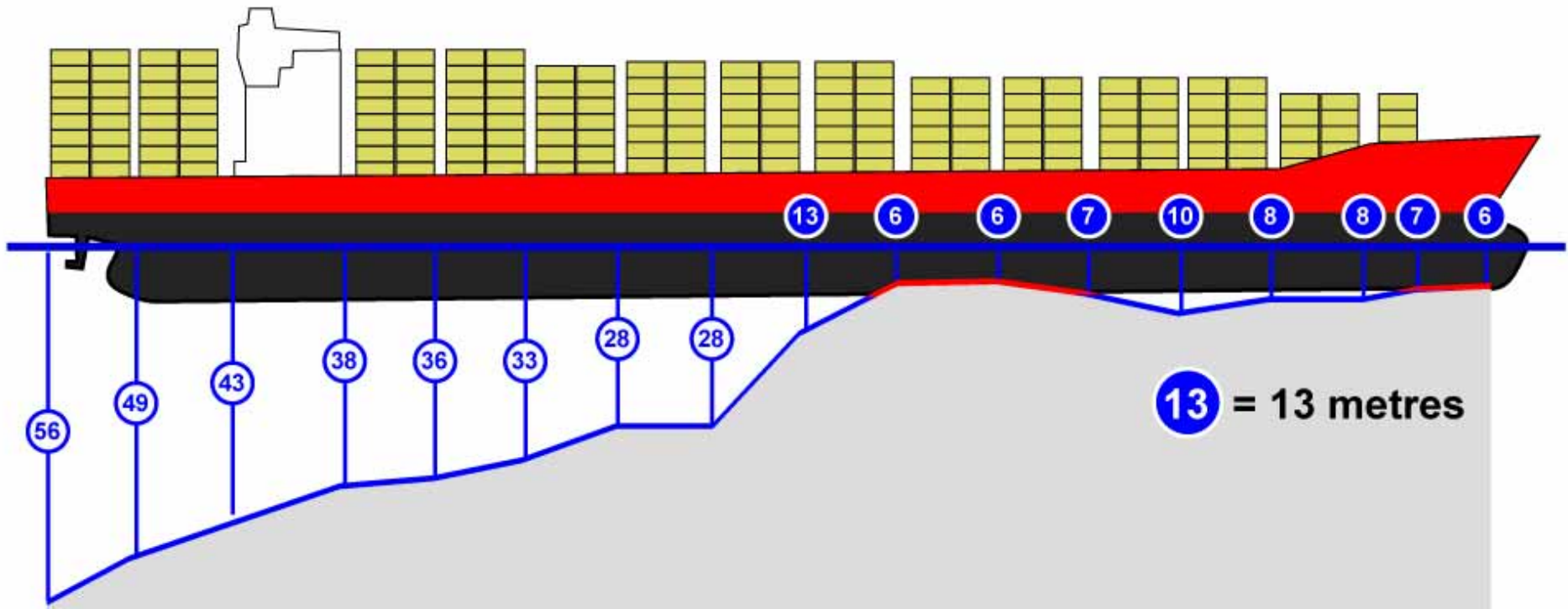
Rena – 09 November 2011



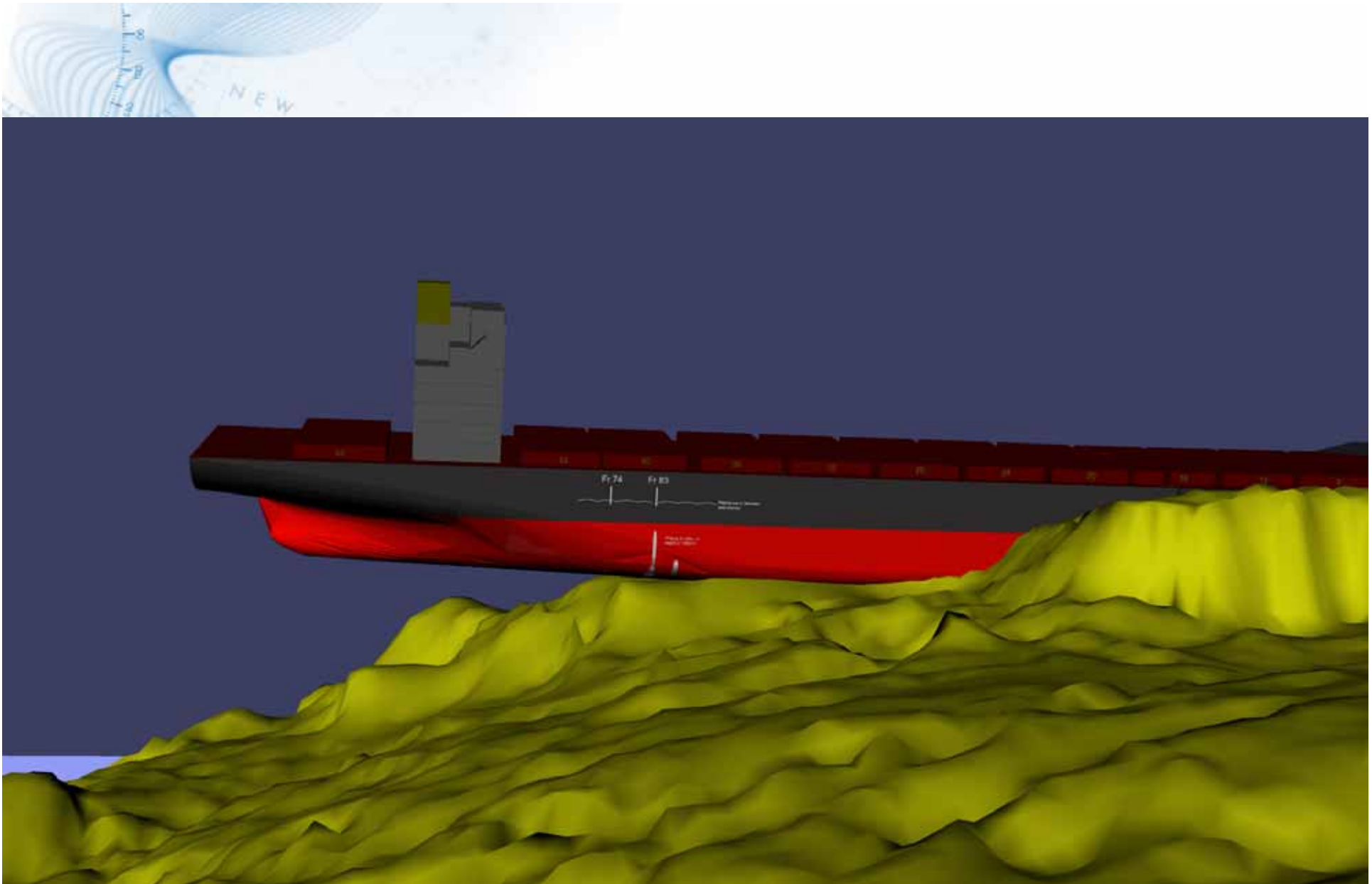
Rena – port side crack



Rena - starboard

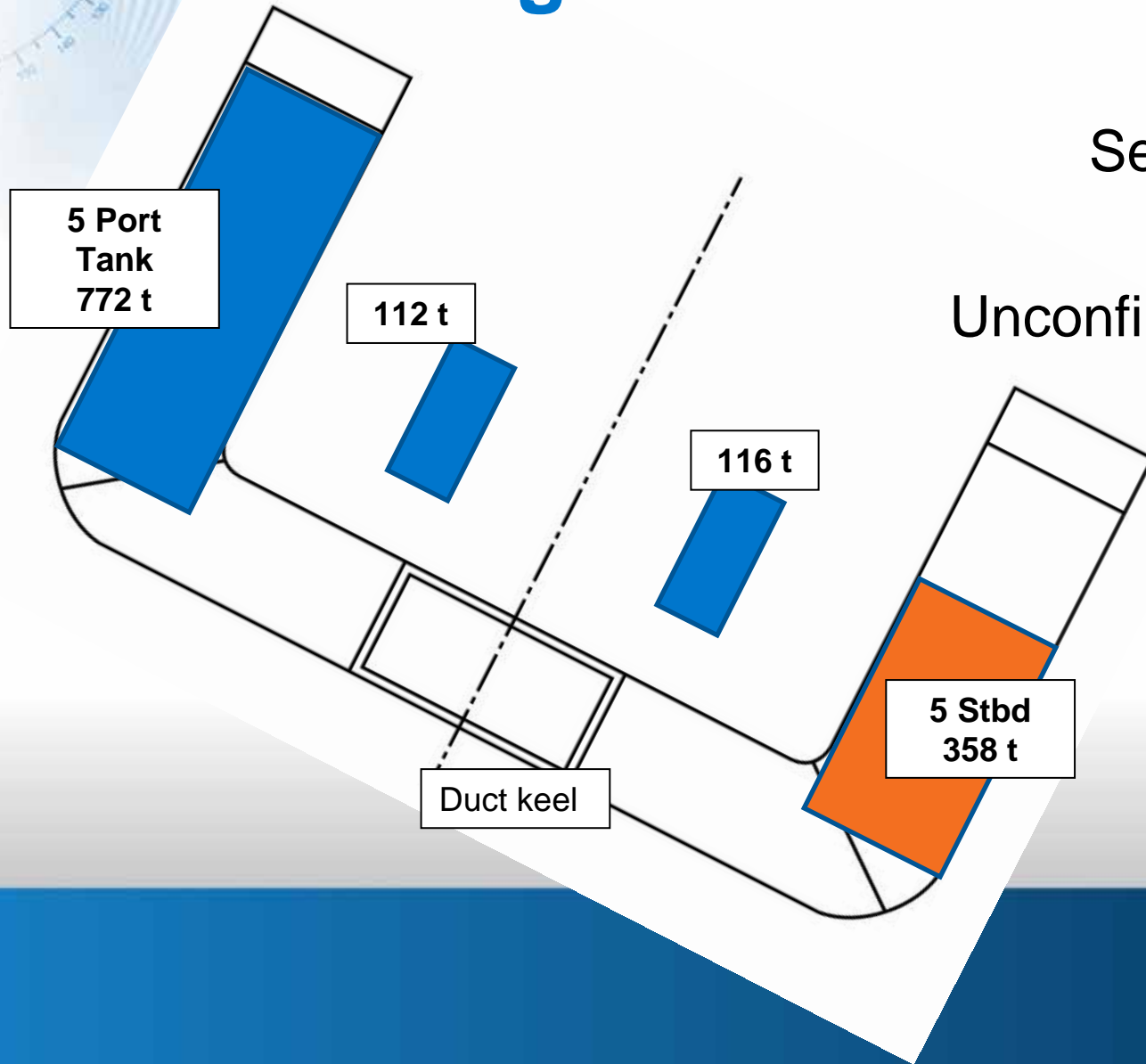


Initial position of vessel on reef



Rena – 3D schematic as at 9 November 2011

Fuel budget



5P	772
Settling tanks	228
Confirmed	<u>1000</u>

Unconfirmed 5Stbd	358
	<u>1358</u>

approx lost or
still aboard **350**

Approx total 1700



Rena grounding response

Andrew Clapham

021 379 955

EMAIL andrew.clapham@maritimenz.govt.nz

FREE 0508 22 55 22

www.maritimenz.govt.nz